

# CUI Activity Report 2015

## 1. Team (Surname, Name)

---

- **Director**  
Magenat-Thalmann Nadia, Professor



- **Senior researchers (MER, MA, Post-Doc)**  
Cuel Louis
- **Assistants (PhD students)**  
Becker Matthias  
Chincisan Andra  
Sénécal Simon  
Tisserand Yvain
- **Developers / Designers**  
Arévalo Marlène  
Cadi-Yazli Nedjma
- **Internship Fellow**  
Garcia David
- **Visiting Academic Guests**  
Rui Filipe Antunes  
Tang Min  
Zang Fanglue
- **Administration**  
Broi Lara

## 2. Domain activities

---

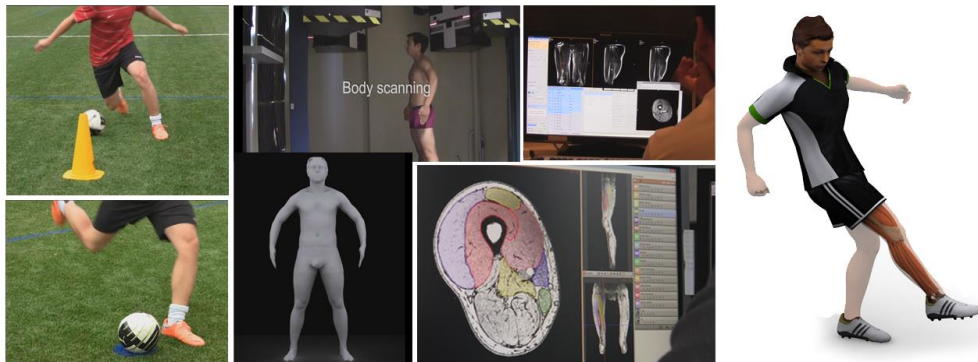
- **Description of the activities of the laboratory research**

MIRALab was founded in 1989 by Professor Nadia Magrenat-Thalmann and has brought together PhD students and researchers from different fields, such as computer science, 3D graphics, 3D simulation, social robotics, 3D fashion design, and cognitive science. This truly

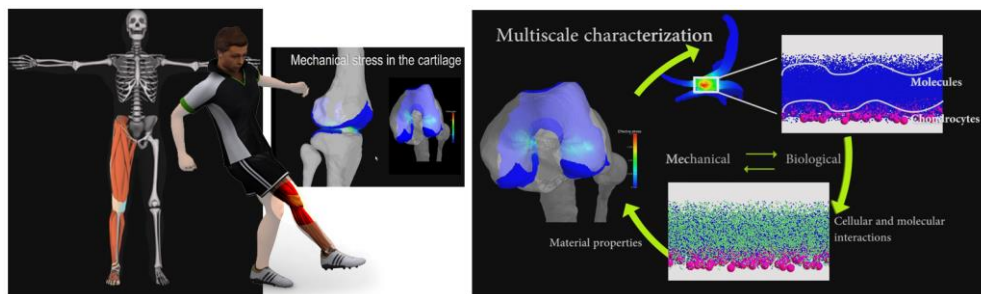
interdisciplinary group continues to work in the field of medical informatics, virtual worlds and virtual humans .

Since 1992, MIRALab has participated in more than 50 European Projects and contributes to the management of two International Conferences, CASA and CGI. Moreover, MIRALab produces 3D showcases for museums, galleries, such as fashion shows with virtual models and clothes. In 2015, MIRALab was working on the following projects: ANINEX, ITN-DCH, MULTISCALEHUMAN and REPLAY.

The following are some images of our work:



MultiScaleHuman project: case study of soccer player (part I) – recreating the soccer player in 3D



MultiScaleHuman project: case study of soccer player (part II) – multi-scale visualization of the knee



RePlay project: Preserving traditional participative sports – simulation in 3D of Gaelic games & Basque sports



ITN-DCH project: case study of Asinou church - recreating the pope in 3D

- Website : <http://www.miralab.ch>

### 3. PhD Thesis

---

- **Lazhari Assassi**  
*'Biomechanical modeling of the hip joint during extreme movements'*  
 June, 2015

### 4. List of publications – Refereed papers in international journals

---

- J. Hou, L.-P. Chau, N. Magnenat Thalmann, Y. He, **SLRMA: Sparse Low-Rank Matrix Approximation for Data Compression**, IEEE Transactions on Circuits and Systems for Video Technology (TCSVT) (IF: 2.259), Vol. PP, Issue. 99, doi.10.1109/TCSVT.2015. 2513698, pp. 1, December 30, 2015
- L. Assassi, N. Magnenat-Thalmann, **Assessment of cartilage contact pressure and loading in the hip joint during split posture**, International Journal of Computer Assisted Radiology and Surgery, Springer, pp 1-12, October 8, 2015
- Z. Yumak and N. Magnenat Thalmann, **Multimodal and Multi-party Social Interactions, Context Aware Human-Robot and Human-Agent Interaction**, Springer International Publishing, 275-298, September 26, 2015
- J. Zhang, J. Zheng and N. Magnenat Thalmann, **Modeling Personality, Mood, and Emotions, Context Aware Human-Robot and Human-Agent Interaction**, Springer International Publishing, 211-236, September 26, 2015
- Z. Zhang, A. Beck and N. Magnenat Thalmann, **Human-Like Behavior Generation Based on HeadArms Model for Tracking External Targets and Body Parts**, IEEE Transactions on Cybernetics (IF: 3.469), vol. 45, Issue. 8, September 18, 2015
- M. Pitikakis, A. Chincisan, N. Magnenat Thalmann, L. Cesario, P. Parascandolo, L. Vosilla and G. Viano, **Automatic Measurement and Visualization of Focal Femoral Cartilage Thickness in Stress-based Regions of Interest using Three-dimensional Knee Models**, Journal of Computer Assisted Radiology and Surgery (IF: 1.66), DOI: 10.1007/s11548-015-1257-3, July 21, 2015

- A. Chincisan, K. Tecante, M. Becker, N. Magnenat Thalmann, C. Hurschler, H.F. Choi, **A Computational Approach to Calculate Personalized Pennation Angle based on MRI: Effect on Motion Analysis**, International Journal of Computer Assisted Radiology and Surgery (IF: 1.66), DOI: 10.1007/s11548-015-1251-9, July 3, 2015
- M. Becker, N. Nijdam and N. Magnenat Thalmann, **Coupling Strategies for Multi-resolution Deformable Meshes: Expanding the Pyramid Approach beyond its One-way Nature**, Journal of Computer Assisted Radiology and Surgery (IF: 1.66), DOI: 10.1007/s11548-015-1241-y, June 20, 2015
- J. Zhang, J. Zheng and N. Magnenat Thalmann, **PCMD: Personality-characterized Mood Dynamics Model Toward Personalized Virtual Characters**, Computer Animation and Virtual Worlds (IF: 0.463), vol. 26, Issue 3-4, pp. 237-245, April 29, 2015
- Z.P. Bian, J. Hou, L.-P. Chau, and N. Magnenat Thalmann, **Facial Position and Expression Based Human Computer Interface for Persons with Tetraplegia**, IEEE Transactions on Information Technology in Biomedicine (IEEE T-ITB) (IF: 2.072), March 11, 2015
- Z.P. Bian, J. Hou, L.P. Chau and N. Magnenat Thalmann, **Fall Detection Based on Body Part Tracking Using a Depth Camera**, IEEE Journal of Biomedical and Health Informatics (IF: 2.072), Vol. 19, No. 2, Pp. 430-439, March 3, 2015
- J. Hou, L.-P. Chau, N. Magnenat Thalmann and Y. He, **Human Motion Capture Data Tailored Transform Coding**, IEEE Transactions on Visualization and Computer Graphics (IEEE T-VCG) (IF: 1.919), 25(1): 51-62, February 13, 2015
- X. Shao, Z. Zhou, N. Magnenat Thalmann, W. Wu, **Stable and Fast Fluid–solid Coupling for Incompressible SPH**, Computer Graphics Forum (IF: 1.595), vol. 34, no. 1, pp. 191-204, February 23, 2015
- J. Hou, L.-P. Chau, N. Magnenat Thalmann and Y. He, **Compressing 3-D Human Motions via Keyframe-Based Geometry Videos**, IEEE Transactions on Circuits and Systems for Video Technology (TCSVT) (IF: 2.259), Vol. 25, Issue 1, Pp. 51-62, DOI:10.1109/TCSVT.2014.2329376, January 6, 2015

## 5. & 6. List of publications – Full refereed papers in Conference & Workshops Proceedings

---

- H. Liang, J. Yuan, D. Thalmann and N. Magnenat Thalmann, **AR in Hand: Egocentric Palm Pose Tracking and Gesture Recognition for Augmented Reality Applications**, ACM Multimedia Conference 2015 (ACMMM 2015), Brisbane, Australia, October 26-30, 2015
- Y. Tisserand and N. Magnenat Thalmann, **Image-based 3D Avatar for Virtual Try-on Applications**, Photogrammetric Week 2015, University of Stuttgart, Germany, September 7-11, 2015
- Coughenour, C. M., Vincent, M. L., Kramer, M. de, Senecal, S., Fritsch, D., & Flores, M.. **Embedding knowledge in 3D data frameworks in Cultural Heritage**, 25th International CIPA Symposium, Taipei. August 31 - September 4, 2015.

- Y. Tahir, D. Chakraborty, T. Maszczyk, S. Dauwels, J. Dauwels, N. Magnenat Thalmann and D. Thalmann, **Real-Time Sociometrics from Audio-Visual Features for Two-Person Dialogs**, 2015 IEEE International Conference on Digital Signal Processing (DSP 2015), Singapore, July 21-24, 2015
- Kramer, M. de, Coughenour, C., Sénécal, S., K. M.. **Common Ground for ITN-DCH: a semantically enriched web platform for integrating and disseminating digital cultural heritage research**, 1st International Conference on Science and Engineering in Arts, Heritage and Archaeology (SEAHA), 1. July 14-15, 2015.
- J. Hou, L.-P. Chau, Y. He, and N. Magnenat Thalmann, **Reordering-based Transform for Compressing Human Motion Capture Data**, International Symposium on Circuits and Systems (ISCAS 2015), Lisbon, Portugal, May 24-27, 2015
- P. Cheng, C. Miao, N. Magnenat Thalmann, **Constrained Texture Mapping via Voronoi Diagram Base Domain**, 28th International Conference on Computer Animation and Social Agents (CASA 2015), Singapore, May 11-13, 2015
- J. Zhang, J. Zheng and N. Magnenat Thalmann, **PCMD: Personality-Characterized Mood Dynamics Model Towards Personalized Virtual Characters**, 28th International Conference on Computer Animation and Social Agents (CASA 2015), Singapore, May 11-13, 2015
- W. Zhang, J. Zheng and N. Magnenat Thalmann, **Real-time Subspace Integration for Example-based Elastic Material**, Computer Graphics Forum (EUROGRAPHICS 2015), Vol. 34, No. 2, May 04-08, 2015

## 7. List of publications – Books

---

- N. Magnenat Thalmann, J. Yuan, D. Thalmann and B.-J. You (Eds.), **Context Aware Human-Robot and Human-Agent Interaction**, Springer, XIII, 298 p. 143 illus., 2015

## 8. List of publications – Book chapters

---

- J. Lee, N. Magnenat Thalmann and D. Thalmann, **Shared Object Manipulation, Context Aware HumanRobot and Human-Agent Interaction**, Springer International Publishing, 191-207, 2015
- J. Zhang, J. Zheng and N. Magnenat Thalmann, **Modeling Personality, Mood, and Emotions, Context Aware Human-Robot and Human-Agent Interaction**, Springer International Publishing, 211-236, 2015
- A. Beck, Z. Zhang and N. Magnenat Thalmann, **Motion Control for Social Behaviors, Context Aware Human-Robot and Human-Agent Interaction**, Springer International Publishing, 237-256, 2015
- Z. Yumak and N. Magnenat Thalmann, **Multimodal and Multi-party Social Interactions, Context Aware Human-Robot and Human-Agent Interaction**, Springer International Publishing, 275-298, 2015

## **9. List of publications – Research and technical reports**

---

Several technical reports for the following projects: ANINEX, ITN-DCH, MULTISCALEHUMAN and REPLAY.

## **10. International and national advisory committees**

---

- |           |   |
|-----------|---|
| 2013-2016 | Member of the Scientific Council of the Institute of Mines-Telecom, Paris, France |
| 2013-2016 | Expert on the advanced grant panel of the European Research Council (ERC)         |

## **11. International and national Research Programs Committees (Include here any participation as Evaluator to EU/US/SNF/Other research programs)**

---

- ICACCI-2015, The 4th International Conference on Advances in Computing, Communications and Informatics, Kerala, India, August 2015
- ICAART 2015, The 7th International Conference on Agents and Artificial Intelligence, Lisbon, Portugal, January 2015

## **12. PhD Thesis committees**

---

- Matthias Becker, Supervisor, University of Geneva, Switzerland
- Andra Chincisan, Supervisor, University of Geneva, Switzerland
- David Garcia, Supervisor, University of Geneva, Switzerland
- Simon Sénécal, Supervisor, University of Geneva, Switzerland
- Yvain Tisserand, Supervisor, University of Geneva, Switzerland
- Sara Trombella, Supervisor, University of Geneva, Switzerland

## **13. Conference organization as chair or co-chair**

---

- |           |   |
|-----------|---|
| Oct. 2015 | Conference Co-Chair, 14th ACM SIGGRAPH International Conference on Virtual Reality Continuum and Its Applications in Industry (VRCAI 2015), Kobe, Japan |
| June 2015 | Program Chair, 32nd Computer Graphics International (CGI 2015), Strasbourg, France  |
| May. 2015 | Conference Chair, 28th International Conference on Computer Animation and Social Agents (CASA 2015), Singapore  |
| Apr. 2015 | Conference Chair, The 3rd International Conference on Computational Visual Media (CVM 2015), Beijing, China   |

## 15. Refereeing (Include any review for Journal)

---

- **Refereeing**

- Jury of Ph.D. thesis for New Zealand, France, Sweden, Switzerland and Germany.
- European Union, FP7 Projects, Brussels.
- Research Grants Council of Singapore.
- Natural Sciences and Engineering Research Council of Canada.
- National Science Foundation USA.
- Swiss National Research Foundation.
- Austrian Research Foundation.
- ACM SIGGRAPH, IEEE Transactions on Visualization and Computer Graphics, IEEE Computer Graphics and Applications, IEEE Computer, Communications of ACM, The Visual Computer, Computer Graphics Forum, Computer Vision, Graphics and Image Processing, Presence, International Journal of Human-Computer Studies, Computers and Graphics, cyberworlds conference, ICAART (International Conference on Agents and Artificial Intelligence), Enactive conference, Multimedia Modelling conference, International Conference on Entertainment Computing (ICEC), International Conference on Signal Processing, Image Processing and Pattern Recognition; GRAPP ("International Conference on Computer Graphics Theory and Applications), Conference on Affective Computing and Intelligent Interaction (ACII 2010), EG Workshop on 3D Object Retrieval, IEEE Virtual Reality Conference 2010, Computer Graphics International, CASA conference, SIGGRAPH/EUROGRAPHICS Symposium on Computer Animation, etc

## 16. Editorial Responsibilities

---

Since 2014	Associate Editor, <b>Frontiers in Robotics</b> , Nature Publisher
Since 2010	Editorial Adviser of the journal of <b>Graphical Models</b> published by Elsevier
Since 2000	Editor-in-Chief of the Journal <b>The Visual Computer</b> published by Springer Verlag, Germany
Since 2000	Editor of the Journal of <b>Computational Geometry</b> published by Elsevier, Holland
Since 1990	Co-founder and Co-editor-in-chief, <b>Journal of Visualization and Computer Animation</b> , John Wiley and Sons.

## 18. Invited talks

---

- Keynote at ShanghaiTech University, **Modelling the Human Body: from its External Appearance to the Hidden Multiscale Level**, School of Information Science and Technology, ShanghaiTech University, Shanghai, China, November 13, 2015  
<http://sist.shanghaitech.edu.cn/NewsDetail.asp?id=516>
- SIGGRAPH ASIA 2015 course on **Multimodal Human-Machine Interaction including Virtual Humans or Social Robots**, Kobe, Japan, November 3, 2015

<http://sa2015.siggraph.org/images/downloads/schedule/Day-2-Tuesday-03-November-28-10-15.pdf>

- Keynote at Ada Lovelace Festival, **Virtual Humans and Social Robots: What are the Challenges, What they can Do?**, Berlin, Germany, October 28, 2015  
<http://wiwo.konferenz.de/ada/programmuebersicht/>
- FT-ACI Smarter World Summit - Showing businesses how to engage with emerging technologies, Panel: **Robots in a Commercial Environment**, InterContinental Singapore, Singapore, October 8, 2015  
<http://www.asia-business-summit.com/SmarterWorldSummitAgenda.html>
- Lecture at University of Modena, **Computer Graphics and 3D Reconstruction**, Italy, September 21-24, 2015  
<http://imagelab.ing.unimore.it/imagelab/>
- Keynote at the Photogrammetric Week 2015, **Image-based 3D Avatar for Virtual Try-on Applications**, Institute for Photogrammetry, University of Stuttgart, Germany, September 10, 2015  
<http://www.ifp.uni-stuttgart.de/phowo/2015/presentations/index.en.html>
- Invited talk at Visual Computing Summer School, **Social Robots & Virtual Humans: State of the Art and What is Next?**, Shandong University, Qingdao, China, 20 July 2015  
<http://irc.cs.sdu.edu.cn/2015-summer-school/>
- Keynote lecture at Computer Assisted Radiology and Surgery (CARS 2015), **Modelling Human Joints: 20 Years of Research and Beyond**, Barcelona, Spain, June 24-27, 2015  
[http://www.cars-int.org/program/program\\_overview.html?L=%2F](http://www.cars-int.org/program/program_overview.html?L=%2F)
- Computer Assisted Radiology and Surgery (CARS 2015) - Workshop on Multiscale Digital Patient (MDP), **Problems and Solutions to the Multiscale Approach**, Barcelona, Spain, June 24-27, 2015  
[http://www.carsint.org/program/cars\\_tutorials\\_special\\_events/cars\\_workshop\\_on\\_multiscale\\_digital\\_patient\\_mdp.html](http://www.carsint.org/program/cars_tutorials_special_events/cars_workshop_on_multiscale_digital_patient_mdp.html)
- Participation to a Panel at Conference on Future of The Doctorate, European Commission, **Supervision and Quality Assurance**, Riga, Latvia, May 28-29, 2015  
<https://future-doctorate.teamwork.fr/en/programme>
- Keynote speech at Workshop on Hightech NTU Day, **The Humanoid Social Robot Nadine: a Social Companion?**, Research Techno Plaza (RTP), NTU, Singapore, May 11, 2015  
[http://conference.ntu.edu.sg/casa2015/Workshops/Pages/About\\_the\\_Workshop.aspx](http://conference.ntu.edu.sg/casa2015/Workshops/Pages/About_the_Workshop.aspx)
- Invited talk at Conference on Smart Nation Innovations – Our Future. Now **Interaction with Virtual Characters and Social Robots**, Hotel Fort Canning, Singapore, April 22, 2015  
<https://www.smartnation.sg/innovations>
- Invited talk at Workshop on Visual Computing for Social and Cognitive Robots (CVM 2015), **Modelling Awareness and Social Behavior for Virtual Humans and Social Robots**, Tsinghua University, Beijing, China, April 15, 2015  
<http://iccvvm.org/2015/workshop/>



## 19. Participation in TV and Radio Programs

---

- **Nadine: the emotional robot receptionist**  
BBC World Service, 31 Dec 2015  
[http://imi.ntu.edu.sg/IMIResearch/Research\\_Areas/Nadine/Documents/Media\\_Coverage/BBCworldservice\\_160101\\_Nadine%20the%20robot%20receptionist.pdf](http://imi.ntu.edu.sg/IMIResearch/Research_Areas/Nadine/Documents/Media_Coverage/BBCworldservice_160101_Nadine%20the%20robot%20receptionist.pdf)

## 20. Press Release

---

- **NTU scientists unveil social and telepresence robots**  
Nanyang Technological University, 29 Dec 2015  
[http://imi.ntu.edu.sg/IMIResearch/Research\\_Areas/Nadine/Documents/Google/NTU.pdf](http://imi.ntu.edu.sg/IMIResearch/Research_Areas/Nadine/Documents/Google/NTU.pdf)
- **Meet Nadine, the terrifyingly lifelike 'social robot' that looks and acts like its owner and could one day work in your office**  
Dailymail, 29 Dec 2015  
[http://imi.ntu.edu.sg/IMIResearch/Research\\_Areas/Nadine/Documents/Google/Dailymail%20UK.pdf](http://imi.ntu.edu.sg/IMIResearch/Research_Areas/Nadine/Documents/Google/Dailymail%20UK.pdf)
- **Scientists unveil social and telepresence robots**  
PHYS ORG, 29 Dec 2015  
[http://imi.ntu.edu.sg/IMIResearch/Research\\_Areas/Nadine/Documents/Google/PHYS%20ORG.pdf](http://imi.ntu.edu.sg/IMIResearch/Research_Areas/Nadine/Documents/Google/PHYS%20ORG.pdf)
- **Singapore: Meet Nadine, the chatty robot that can remember past conversations**  
Ruptly, 29 Dec 2015  
[http://imi.ntu.edu.sg/IMIResearch/Research\\_Areas/Nadine/Documents/Google/Ruptly.pdf](http://imi.ntu.edu.sg/IMIResearch/Research_Areas/Nadine/Documents/Google/Ruptly.pdf)
- **Meet Nadine, the terrifyingly lifelike 'social robot' that looks and acts like its owner and could one day work in your office**  
The Daily Mail Online, 29 Dec 2015  
[http://imi.ntu.edu.sg/IMIResearch/Research\\_Areas/Nadine/Documents/Google/20\\_Daily%20Mail%20Online\\_291215\\_Meet%20Nadine.%20the%20terrifyingly%20lifelike%20%27social%20robot%27%20that%20looks%20and%20acts%20like%20its%20owner.pdf](http://imi.ntu.edu.sg/IMIResearch/Research_Areas/Nadine/Documents/Google/20_Daily%20Mail%20Online_291215_Meet%20Nadine.%20the%20terrifyingly%20lifelike%20%27social%20robot%27%20that%20looks%20and%20acts%20like%20its%20owner.pdf)
- **Meet Nadine, the eerily-realistic social robot that works as a receptionist**  
RedOrbit, 30 Dec 2015  
[http://imi.ntu.edu.sg/IMIResearch/Research\\_Areas/Nadine/Documents/Media\\_Coverage/RedOrbit\\_160101\\_Meet%20Nadine%20the%20eerily-realistic%20social%20robot%20that%20works%20as%20a%20receptionist.pdf](http://imi.ntu.edu.sg/IMIResearch/Research_Areas/Nadine/Documents/Media_Coverage/RedOrbit_160101_Meet%20Nadine%20the%20eerily-realistic%20social%20robot%20that%20works%20as%20a%20receptionist.pdf)
- **Scientists have built a 'social' robot with a personality**  
Newsweek, 30 Dec 2015  
[http://imi.ntu.edu.sg/IMIResearch/Research\\_Areas/Nadine/Documents/Media\\_Coverage/Newsweek\\_160101\\_Nadine%20robot.pdf](http://imi.ntu.edu.sg/IMIResearch/Research_Areas/Nadine/Documents/Media_Coverage/Newsweek_160101_Nadine%20robot.pdf)
- **Meet Nadine, the Social Robot Who Can Give You Company**  
NDTV, 30 Dec 2015  
[http://imi.ntu.edu.sg/IMIResearch/Research\\_Areas/Nadine/Documents/Media\\_Coverage/NDTV\\_160104\\_Meet%20Nadine%20the%20Social%20Robot%20Who%20Can%20Give%20You%20Company.pdf](http://imi.ntu.edu.sg/IMIResearch/Research_Areas/Nadine/Documents/Media_Coverage/NDTV_160104_Meet%20Nadine%20the%20Social%20Robot%20Who%20Can%20Give%20You%20Company.pdf)
- **Say hello to 'social' robot Nadine**  
The Financial Express, 30 Dec 2015  
[http://imi.ntu.edu.sg/IMIResearch/Research\\_Areas/Nadine/Documents/Media\\_Coverage/FinancialExpress\\_160104\\_Say%20hello%20to%20%E2%80%99social%E2%80%99%20robot%20Nadine.pdf](http://imi.ntu.edu.sg/IMIResearch/Research_Areas/Nadine/Documents/Media_Coverage/FinancialExpress_160104_Say%20hello%20to%20%E2%80%99social%E2%80%99%20robot%20Nadine.pdf)
- **NTU develops social companion robots that mimic humans**  
Tamil Murasu, 30 Dec 2015  
[http://imi.ntu.edu.sg/IMIResearch/Research\\_Areas/Nadine/Documents/Media\\_Coverage/TM\\_15123](http://imi.ntu.edu.sg/IMIResearch/Research_Areas/Nadine/Documents/Media_Coverage/TM_15123)

[0\\_3\\_.pdf](#)

- **New social robot Nadine has a personality**  
United Press International, 30 Dec 2015  
[http://imi.ntu.edu.sg/IMIRResearch/Research\\_Areas/Nadine/Documents/Media\\_Coverage/UPI\\_151230\\_Nadine%20social%20robot.pdf](http://imi.ntu.edu.sg/IMIRResearch/Research_Areas/Nadine/Documents/Media_Coverage/UPI_151230_Nadine%20social%20robot.pdf)
- **Scientists unveil Nadine, the world's most human-like robot**  
International Business Times, 30 Dec 2015  
[http://imi.ntu.edu.sg/IMIRResearch/Research\\_Areas/Nadine/Documents/Media\\_Coverage/IBTimesAU\\_151230\\_Scientists%20unveil%20Nadine%20the%20worlds%20most%20human-like%20robot.pdf](http://imi.ntu.edu.sg/IMIRResearch/Research_Areas/Nadine/Documents/Media_Coverage/IBTimesAU_151230_Scientists%20unveil%20Nadine%20the%20worlds%20most%20human-like%20robot.pdf)
- **New human-like social robot 'Nadine' developed**  
Times of India, 30 Dec 2015 (Also reported in *The Business Standard*, *Design Products and Applications*, *Tech 2*, *Canada India News*,)  
[http://imi.ntu.edu.sg/IMIRResearch/Research\\_Areas/Nadine/Documents/Media\\_Coverage/TimesofIndia\\_151230\\_Scientists%20develop%20new%20human-like%20social%20robot%20Nadine.pdf](http://imi.ntu.edu.sg/IMIRResearch/Research_Areas/Nadine/Documents/Media_Coverage/TimesofIndia_151230_Scientists%20develop%20new%20human-like%20social%20robot%20Nadine.pdf)
- **Nadine the social robot takes you straight to 'Uncanny Valley'**  
MSN, 30 Dec 2015  
[http://imi.ntu.edu.sg/IMIRResearch/Research\\_Areas/Nadine/Documents/Media\\_Coverage/MSNnews\\_151230\\_Nadine%20the%20social%20robot%20takes%20you%20straight%20to%20Uncanny%20Valley.pdf](http://imi.ntu.edu.sg/IMIRResearch/Research_Areas/Nadine/Documents/Media_Coverage/MSNnews_151230_Nadine%20the%20social%20robot%20takes%20you%20straight%20to%20Uncanny%20Valley.pdf)
- **WIRED Awake: Humanoid social robots could be the personal assistants of the future**  
Wired, UK, 30 Dec 2015  
[http://imi.ntu.edu.sg/IMIRResearch/Research\\_Areas/Nadine/Documents/Media\\_Coverage/WIREDUK\\_151230\\_10%20must-read%20articles.pdf](http://imi.ntu.edu.sg/IMIRResearch/Research_Areas/Nadine/Documents/Media_Coverage/WIREDUK_151230_10%20must-read%20articles.pdf)
- **Scientists unveil world's most human-like robot**  
Press TV, 30 Dec 2015  
[http://imi.ntu.edu.sg/IMIRResearch/Research\\_Areas/Nadine/Documents/Media\\_Coverage/PressTV\\_151230\\_Nadine%20social%20robot.pdf](http://imi.ntu.edu.sg/IMIRResearch/Research_Areas/Nadine/Documents/Media_Coverage/PressTV_151230_Nadine%20social%20robot.pdf)
- **Nadine Is A Social Robot That Can Keep You Company**  
Ubergizmo, 30 Dec 2015  
[http://imi.ntu.edu.sg/IMIRResearch/Research\\_Areas/Nadine/Documents/Media\\_Coverage/Ubergizmo\\_151230\\_Nadine%20Is%20A%20Social%20Robot%20That%20Can%20Keep%20You%20Company.pdf](http://imi.ntu.edu.sg/IMIRResearch/Research_Areas/Nadine/Documents/Media_Coverage/Ubergizmo_151230_Nadine%20Is%20A%20Social%20Robot%20That%20Can%20Keep%20You%20Company.pdf)
- **NTU Researchers Introduce Their New 'Receptionist' Nadine: The Intelligent Social Humanoid**  
Crazy Engineers, 30 Dec 2015  
[http://imi.ntu.edu.sg/IMIRResearch/Research\\_Areas/Nadine/Documents/Media\\_Coverage/CrazyEngineers\\_151230\\_NTU%20Researchers%20Introduce%20Their%20Nadine.pdf](http://imi.ntu.edu.sg/IMIRResearch/Research_Areas/Nadine/Documents/Media_Coverage/CrazyEngineers_151230_NTU%20Researchers%20Introduce%20Their%20Nadine.pdf)
- **New social robot Nadine has a personality**  
Breitbart, 30 Dec 2015  
[http://imi.ntu.edu.sg/IMIRResearch/Research\\_Areas/Nadine/Documents/Media\\_Coverage/Breitbart\\_151231\\_New%20social%20robot%20Nadine%20has%20a%20personality.pdf](http://imi.ntu.edu.sg/IMIRResearch/Research_Areas/Nadine/Documents/Media_Coverage/Breitbart_151231_New%20social%20robot%20Nadine%20has%20a%20personality.pdf)
- **Human-looking robots are here**  
WPTZ Burlington, 30 Dec 2015  
[http://imi.ntu.edu.sg/IMIRResearch/Research\\_Areas/Nadine/Documents/Media\\_Coverage/WPTZ\\_151230\\_Human-looking%20robots%20are%20here.pdf](http://imi.ntu.edu.sg/IMIRResearch/Research_Areas/Nadine/Documents/Media_Coverage/WPTZ_151230_Human-looking%20robots%20are%20here.pdf)
- **Say Hello to Nadine, a Robot Receptionist With Real Emotions**  
Details, 30 Dec 2015  
[http://imi.ntu.edu.sg/IMIRResearch/Research\\_Areas/Nadine/Documents/Media\\_Coverage/Details\\_151230\\_Say%20Hello%20to%20Nadine%20a%20Robot%20Receptionist%20With%20Real%20Emotions.pdf](http://imi.ntu.edu.sg/IMIRResearch/Research_Areas/Nadine/Documents/Media_Coverage/Details_151230_Say%20Hello%20to%20Nadine%20a%20Robot%20Receptionist%20With%20Real%20Emotions.pdf)

- **Say hi to 'Nadine' when you come to NTU**  
biotechn.asia, (Chinese) 30 Dec 2015 (Similar articles in [ukchinese.com](http://ukchinese.com) and [Sohu.com](http://Sohu.com))
- [http://imi.ntu.edu.sg/IMIRResearch/Research\\_Areas/Nadine/Documents/Media\\_Coverage/Biotechnasia\\_151231\\_Say%20hi%20to%20Nadine%20when%20you%20come%20to%20NTU.pdf](http://imi.ntu.edu.sg/IMIRResearch/Research_Areas/Nadine/Documents/Media_Coverage/Biotechnasia_151231_Say%20hi%20to%20Nadine%20when%20you%20come%20to%20NTU.pdf)
- **Meet Nadine, the Most Human-Like 'Social' Robot Created So Far**  
Investigative Headline News, 30 Dec 2015  
[http://imi.ntu.edu.sg/IMIRResearch/Research\\_Areas/Nadine/Documents/Google/Susanne%20Posel.pdf](http://imi.ntu.edu.sg/IMIRResearch/Research_Areas/Nadine/Documents/Google/Susanne%20Posel.pdf)
- **Scientists develop new human-like social robot 'Nadine' developed**  
The Economic Times, 30 Dec 2015  
[http://imi.ntu.edu.sg/IMIRResearch/Research\\_Areas/Nadine/Documents/Google/The%20Economic%20Times.pdf](http://imi.ntu.edu.sg/IMIRResearch/Research_Areas/Nadine/Documents/Google/The%20Economic%20Times.pdf)
- **Meet Nadine, the social robot who can give you company**  
Yahoo News, 30 Dec 2015  
[http://imi.ntu.edu.sg/IMIRResearch/Research\\_Areas/Nadine/Documents/Google/Yahoo.pdf](http://imi.ntu.edu.sg/IMIRResearch/Research_Areas/Nadine/Documents/Google/Yahoo.pdf)
- **Meet Nadine, the social robot who can give you company**  
Farandu Life, 30 Dec 2015  
[http://imi.ntu.edu.sg/IMIRResearch/Research\\_Areas/Nadine/Documents/Google/Farandu%20Life.pdf](http://imi.ntu.edu.sg/IMIRResearch/Research_Areas/Nadine/Documents/Google/Farandu%20Life.pdf)
- **New 'social robot' has an actual personality**  
Science Recorder, 30 Dec 2015  
[http://imi.ntu.edu.sg/IMIRResearch/Research\\_Areas/Nadine/Documents/Google/Science%20Recorder.pdf](http://imi.ntu.edu.sg/IMIRResearch/Research_Areas/Nadine/Documents/Google/Science%20Recorder.pdf)
- **Meet NTU's robots, Nadine and Edgar**  
Omy, 30 Dec 2015  
[http://imi.ntu.edu.sg/IMIRResearch/Research\\_Areas/Nadine/Documents/Google/News%20OMY.pdf](http://imi.ntu.edu.sg/IMIRResearch/Research_Areas/Nadine/Documents/Google/News%20OMY.pdf)
- **'Social Robot Nadine' Capable of Complex Thought, Has Personality**  
University Herald, 30 Dec 2015  
[http://imi.ntu.edu.sg/IMIRResearch/Research\\_Areas/Nadine/Documents/Google/University%20Herald.pdf](http://imi.ntu.edu.sg/IMIRResearch/Research_Areas/Nadine/Documents/Google/University%20Herald.pdf)
- **NTU Unveils Nadine, One of Two Robots with Artificial Intelligence Software**  
The New Paper Online, 30 Dec 2015  
[http://imi.ntu.edu.sg/IMIRResearch/Research\\_Areas/Nadine/Documents/Google/TNP.pdf](http://imi.ntu.edu.sg/IMIRResearch/Research_Areas/Nadine/Documents/Google/TNP.pdf)
- **Nadine the social robot takes you straight to 'Uncanny Valley'**  
cmdrkeene's Blog, 30 Dec 2015  
[http://imi.ntu.edu.sg/IMIRResearch/Research\\_Areas/Nadine/Documents/Google/Cmdrkeene.pdf](http://imi.ntu.edu.sg/IMIRResearch/Research_Areas/Nadine/Documents/Google/Cmdrkeene.pdf)
- **Meet Nadine, the social robot who can give you company**  
Pasion Noticias, 30 Dec 2015  
[http://imi.ntu.edu.sg/IMIRResearch/Research\\_Areas/Nadine/Documents/Google/Pasion%20Noticias.pdf](http://imi.ntu.edu.sg/IMIRResearch/Research_Areas/Nadine/Documents/Google/Pasion%20Noticias.pdf)
- **Singapore's NTU unveils social robot that 'could be like Star Wars' C-3PO'**  
Malaymail Online, 30 Dec 2015  
[http://imi.ntu.edu.sg/IMIRResearch/Research\\_Areas/Nadine/Documents/Google/Malay%20Mail%20Online.pdf](http://imi.ntu.edu.sg/IMIRResearch/Research_Areas/Nadine/Documents/Google/Malay%20Mail%20Online.pdf)
- **Meet Nadine, The human-like social robot with soft skin, flowing hair and range of emotions**  
TechnoMauri, 30 Dec 2015  
[http://imi.ntu.edu.sg/IMIRResearch/Research\\_Areas/Nadine/Documents/Google/Techno%20Mauri.pdf](http://imi.ntu.edu.sg/IMIRResearch/Research_Areas/Nadine/Documents/Google/Techno%20Mauri.pdf)
- **Meet Nadine, the Social Robot Who Can Give You Company**  
Equilibrio Informativo, 30 Dec 2015  
[http://imi.ntu.edu.sg/IMIRResearch/Research\\_Areas/Nadine/Documents/Google/Equilibrioinformativo.pdf](http://imi.ntu.edu.sg/IMIRResearch/Research_Areas/Nadine/Documents/Google/Equilibrioinformativo.pdf)
- **Robot 'Nadine' Is The First Humanoid With Emotional Intelligence; Iniversity Employs Her As**

## **A Secretary.**

Medical Daily, Dec 2015

[http://imi.ntu.edu.sg/IMIRResearch/Research\\_Areas/Nadine/Documents/Google/Medical%20Daily.pdf](http://imi.ntu.edu.sg/IMIRResearch/Research_Areas/Nadine/Documents/Google/Medical%20Daily.pdf)

- **Meet Nadine, the terrifyingly lifelike 'social robot' that looks and acts like its owner**  
newsusauk, 30 Dec 2015  
[http://imi.ntu.edu.sg/IMIRResearch/Research\\_Areas/Nadine/Documents/Google/News%20USA%20UK.pdf](http://imi.ntu.edu.sg/IMIRResearch/Research_Areas/Nadine/Documents/Google/News%20USA%20UK.pdf)
- **Say Hello to Nadine, a Robot Receptionist With Real Emotions**  
Details, 30 Dec 2015  
[http://imi.ntu.edu.sg/IMIRResearch/Research\\_Areas/Nadine/Documents/Google/Details.pdf](http://imi.ntu.edu.sg/IMIRResearch/Research_Areas/Nadine/Documents/Google/Details.pdf)
- **Nadine the social robotic takes you straight to 'Uncanny Valley'**  
XENERO, 30 Dec 2015  
[http://imi.ntu.edu.sg/IMIRResearch/Research\\_Areas/Nadine/Documents/Google/Xenero.pdf](http://imi.ntu.edu.sg/IMIRResearch/Research_Areas/Nadine/Documents/Google/Xenero.pdf)
- **Say hello to 'social' robot Nadine Tri-County Sun Times**  
Tri-Country Sun Times, 30 Dec 2015  
[http://imi.ntu.edu.sg/IMIRResearch/Research\\_Areas/Nadine/Documents/Google/The%20Villages%20Suntimes.pdf](http://imi.ntu.edu.sg/IMIRResearch/Research_Areas/Nadine/Documents/Google/The%20Villages%20Suntimes.pdf)
- **Nadine Is a Robot That Remembers Your Past Conversations, Unlike Your Real Friends**  
Tech.Mic, 30 Dec 2015  
[http://imi.ntu.edu.sg/IMIRResearch/Research\\_Areas/Nadine/Documents/Google/Tech%20Mic.pdf](http://imi.ntu.edu.sg/IMIRResearch/Research_Areas/Nadine/Documents/Google/Tech%20Mic.pdf)
- **Nadine the social robot takes you straight to 'Uncanny Valley'**  
Technology 2015, 30 Dec 2015  
[http://imi.ntu.edu.sg/IMIRResearch/Research\\_Areas/Nadine/Documents/Google/Technology%202015.pdf](http://imi.ntu.edu.sg/IMIRResearch/Research_Areas/Nadine/Documents/Google/Technology%202015.pdf)
- **Say hello to 'social' robot Nadine**  
ABRUZZO, 30 Dec 2015  
[http://imi.ntu.edu.sg/IMIRResearch/Research\\_Areas/Nadine/Documents/Google/Abruzzo.pdf](http://imi.ntu.edu.sg/IMIRResearch/Research_Areas/Nadine/Documents/Google/Abruzzo.pdf)
- **Nadine the social robot takes you straight to 'Uncanny Valley'**  
CTRLHELP, 30 Dec 215  
[http://imi.ntu.edu.sg/IMIRResearch/Research\\_Areas/Nadine/Documents/Google/Ctrl%20Help.pdf](http://imi.ntu.edu.sg/IMIRResearch/Research_Areas/Nadine/Documents/Google/Ctrl%20Help.pdf)
- **Nadine, the Social Robot Who Can Give You Company**  
90's Gang, 30 Dec 2015  
[http://imi.ntu.edu.sg/IMIRResearch/Research\\_Areas/Nadine/Documents/Google/Gang.pdf](http://imi.ntu.edu.sg/IMIRResearch/Research_Areas/Nadine/Documents/Google/Gang.pdf)
- **This humanoid robot is eerily lifelike**  
The Next Web News, 30 Dec 2015  
[http://imi.ntu.edu.sg/IMIRResearch/Research\\_Areas/Nadine/Documents/Google/02\\_The%20Next%20Web%20News\\_301215\\_This%20humanoid%20robot%20is%20eerily%20lifelike.pdf](http://imi.ntu.edu.sg/IMIRResearch/Research_Areas/Nadine/Documents/Google/02_The%20Next%20Web%20News_301215_This%20humanoid%20robot%20is%20eerily%20lifelike.pdf)
- **Introducing Nadine, the world's most life-like robot**  
The Sun, 30 Dec 2015  
[http://imi.ntu.edu.sg/IMIRResearch/Research\\_Areas/Nadine/Documents/Media\\_Coverage/TheSun\\_151230\\_Scientists%20invent%20most%20human-like%20robot.pdf](http://imi.ntu.edu.sg/IMIRResearch/Research_Areas/Nadine/Documents/Media_Coverage/TheSun_151230_Scientists%20invent%20most%20human-like%20robot.pdf)
- **Meet Nadine, the robot receptionist that thinks and acts like a human**  
The Daily Telegraph, 30 Dec 2015  
[http://imi.ntu.edu.sg/IMIRResearch/Research\\_Areas/Nadine/Documents/Media\\_Coverage/TheDailyTelegraphUK\\_151230\\_Nadine%20robot%20receptionist.pdf](http://imi.ntu.edu.sg/IMIRResearch/Research_Areas/Nadine/Documents/Media_Coverage/TheDailyTelegraphUK_151230_Nadine%20robot%20receptionist.pdf)
- **Nadine the social robot takes you straight to 'Uncanny Valley'**  
Engadget, 30 Dec 2015  
[http://imi.ntu.edu.sg/IMIRResearch/Research\\_Areas/Nadine/Documents/Media\\_Coverage/Engadget\\_160101\\_Nadine%20social%20robot%20takes%20you%20straight%20to%20Uncanny%20Valley.pdf](http://imi.ntu.edu.sg/IMIRResearch/Research_Areas/Nadine/Documents/Media_Coverage/Engadget_160101_Nadine%20social%20robot%20takes%20you%20straight%20to%20Uncanny%20Valley.pdf)
- **Say hello to 'social' robot Nadine**  
newkerala.com, 30 Dec 2015

[http://imi.ntu.edu.sg/IMIRResearch/Research\\_Areas/Nadine/Documents/Google/19\\_newkerala.com\\_301215\\_Say%20hello%20to%20%27social%27%20robot%20Nadine.pdf](http://imi.ntu.edu.sg/IMIRResearch/Research_Areas/Nadine/Documents/Google/19_newkerala.com_301215_Say%20hello%20to%20%27social%27%20robot%20Nadine.pdf)

- **Soft-skinned, brunette robot wants to be your friend**  
New York Post, 31 Dec 2015  
[http://www3.ntu.edu.sg/corpcomms2/Documents/2015/12\\_Dec/NYP\\_151231\\_Soft-skinned,%20brunette%20robot%20wants%20to%20be%20your%20friend.pdf](http://www3.ntu.edu.sg/corpcomms2/Documents/2015/12_Dec/NYP_151231_Soft-skinned,%20brunette%20robot%20wants%20to%20be%20your%20friend.pdf)
- **Don't Give This Robot Attitude, She'll Throw It Right Back At You**  
Fortune, 31 Dec 2015  
[http://imi.ntu.edu.sg/IMIRResearch/Research\\_Areas/Nadine/Documents/Media\\_Coverage/Fortune\\_160101\\_New%20Robot%20Can%20Call%20For%20Help%20And%20Carry%20A%20Tune%20-%20Fortune.pdf](http://imi.ntu.edu.sg/IMIRResearch/Research_Areas/Nadine/Documents/Media_Coverage/Fortune_160101_New%20Robot%20Can%20Call%20For%20Help%20And%20Carry%20A%20Tune%20-%20Fortune.pdf)
- **Nadine – a lifelike robot engineered to look similar to her creator by Singapore university**  
The Times Gazette, 31 Dec 2015  
[http://imi.ntu.edu.sg/IMIRResearch/Research\\_Areas/Nadine/Documents/Media\\_Coverage/Times%20Gazette\\_160101\\_Nadine%20%E2%80%93%20A%20lifelike%20robot%20engineered%20to%20look%20similar%20to%20her%20creator%20by%20Singapore%20University.pdf](http://imi.ntu.edu.sg/IMIRResearch/Research_Areas/Nadine/Documents/Media_Coverage/Times%20Gazette_160101_Nadine%20%E2%80%93%20A%20lifelike%20robot%20engineered%20to%20look%20similar%20to%20her%20creator%20by%20Singapore%20University.pdf)
- **NTU Singapore Researchers develop Humanoid Robot Nadine**  
Northern Californian, 31 Dec 2015  
[http://imi.ntu.edu.sg/IMIRResearch/Research\\_Areas/Nadine/Documents/Media\\_Coverage/NorthCalifonian\\_160101\\_NTU%20Singapore%20Researchers%20develop%20Humanoid%20Robot%20Nadine.pdf](http://imi.ntu.edu.sg/IMIRResearch/Research_Areas/Nadine/Documents/Media_Coverage/NorthCalifonian_160101_NTU%20Singapore%20Researchers%20develop%20Humanoid%20Robot%20Nadine.pdf)
- **Humanoid Doppelganger Robot Nadine Gives People The Jitters**  
Utah People's Post, 31 Dec 2015  
[http://imi.ntu.edu.sg/IMIRResearch/Research\\_Areas/Nadine/Documents/Media\\_Coverage/UPP\\_160101\\_Humanoid%20Doppelganger%20Robot%20Nadine%20Gives%20People%20the%20Jitters.pdf](http://imi.ntu.edu.sg/IMIRResearch/Research_Areas/Nadine/Documents/Media_Coverage/UPP_160101_Humanoid%20Doppelganger%20Robot%20Nadine%20Gives%20People%20the%20Jitters.pdf)
- **Chee Chew's take on Nadine, the companion robot**  
The Straits Times, 31 Dec 2015  
[http://imi.ntu.edu.sg/IMIRResearch/Research\\_Areas/Nadine/Documents/Media\\_Coverage/ST\\_151231\\_Nadine%20comic.pdf](http://imi.ntu.edu.sg/IMIRResearch/Research_Areas/Nadine/Documents/Media_Coverage/ST_151231_Nadine%20comic.pdf)
- **Human/Like Robot 'Nadine' Who Has a 'Personality, Mood and Emotions' Unveiled in Singapore**  
ABC News, 31 Dec 2015  
[http://www3.ntu.edu.sg/corpcomms2/Documents/2015/12\\_Dec/ABCnewsUSA\\_151230\\_Human-Like%20Robot%20Nadine%20Who%20Has%20a%20Personality,%20Mood%20and%20Emotions%20Unveiled%20in%20Singapore.pdf](http://www3.ntu.edu.sg/corpcomms2/Documents/2015/12_Dec/ABCnewsUSA_151230_Human-Like%20Robot%20Nadine%20Who%20Has%20a%20Personality,%20Mood%20and%20Emotions%20Unveiled%20in%20Singapore.pdf)
- **University unveils human looking robot**  
Sky news, 31 Dec 2015  
[http://imi.ntu.edu.sg/IMIRResearch/Research\\_Areas/Nadine/Documents/Media\\_Coverage/Skynews\\_151230\\_University%20unveils%20human%20looking%20robot.pdf](http://imi.ntu.edu.sg/IMIRResearch/Research_Areas/Nadine/Documents/Media_Coverage/Skynews_151230_University%20unveils%20human%20looking%20robot.pdf)
- **Meet Nadine, a humanoid social robot created by NTU**  
e27, 31 Dec 2015  
[http://imi.ntu.edu.sg/IMIRResearch/Research\\_Areas/Nadine/Documents/Media\\_Coverage/E27\\_151231\\_Meet%20Nadine%20a%20humanoid%20social%20robot%20created%20by%20NTU.pdf](http://imi.ntu.edu.sg/IMIRResearch/Research_Areas/Nadine/Documents/Media_Coverage/E27_151231_Meet%20Nadine%20a%20humanoid%20social%20robot%20created%20by%20NTU.pdf)
- **Rise Of The 'Social' Robots: NTU Singapore Unveils Nadine, The Chatty Receptionist**  
Forbes, 31 Dec 2015  
[http://imi.ntu.edu.sg/IMIRResearch/Research\\_Areas/Nadine/Documents/Google/Forbes.pdf](http://imi.ntu.edu.sg/IMIRResearch/Research_Areas/Nadine/Documents/Google/Forbes.pdf)
- **Humanlike, Social Robot 'Nadine' Can Feel Emotions And Has A Good Memory, Scientists Claim**  
International Business Time, 31 Dec 2015  
[http://imi.ntu.edu.sg/IMIRResearch/Research\\_Areas/Nadine/Documents/Google/IBT.pdf](http://imi.ntu.edu.sg/IMIRResearch/Research_Areas/Nadine/Documents/Google/IBT.pdf)
- **Human-looking 'social robot' revealed by Singapore University**

- Belfast Telegraph, 31 Dec 2015  
[http://imi.ntu.edu.sg/IMIRResearch/Research\\_Areas/Nadine/Documents/Google/Belfasttelegraph.pdf](http://imi.ntu.edu.sg/IMIRResearch/Research_Areas/Nadine/Documents/Google/Belfasttelegraph.pdf)
- **Meet Nadine, the Most Human-Like 'Social' Robot Created So Far**  
 Nsnbc International, 31 Dec 2015  
[http://imi.ntu.edu.sg/IMIRResearch/Research\\_Areas/Nadine/Documents/Google/nsnbc%20International.pdf](http://imi.ntu.edu.sg/IMIRResearch/Research_Areas/Nadine/Documents/Google/nsnbc%20International.pdf)
  - **Meet Nadine, the social robot that can keep you company**  
 Express, 31 Dec 2015  
[http://imi.ntu.edu.sg/IMIRResearch/Research\\_Areas/Nadine/Documents/Google/Express%20UK.pdf](http://imi.ntu.edu.sg/IMIRResearch/Research_Areas/Nadine/Documents/Google/Express%20UK.pdf)
  - **Meet human-like social robot 'Nadine'**  
 The Tribune, 31 Dec 2015  
[http://imi.ntu.edu.sg/IMIRResearch/Research\\_Areas/Nadine/Documents/Google/The%20Tribune.pdf](http://imi.ntu.edu.sg/IMIRResearch/Research_Areas/Nadine/Documents/Google/The%20Tribune.pdf)
  - **Meet Nadine: Creepy, New 'Social Robot' With a Personality**  
 Yibada, 31 Dec 2015  
[http://imi.ntu.edu.sg/IMIRResearch/Research\\_Areas/Nadine/Documents/Google/Yibada.pdf](http://imi.ntu.edu.sg/IMIRResearch/Research_Areas/Nadine/Documents/Google/Yibada.pdf)
  - **NTU Singapore Develops Impressive Social Robot '**  
 West Texas News, 31 Dec 2015  
[http://imi.ntu.edu.sg/IMIRResearch/Research\\_Areas/Nadine/Documents/Google/West%20Texas%20News.pdf](http://imi.ntu.edu.sg/IMIRResearch/Research_Areas/Nadine/Documents/Google/West%20Texas%20News.pdf)
  - **Meet Nadine, the social robot who can give you company**  
 Waltonian, 31 Dec 2015  
[http://imi.ntu.edu.sg/IMIRResearch/Research\\_Areas/Nadine/Documents/Google/Waltonian.pdf](http://imi.ntu.edu.sg/IMIRResearch/Research_Areas/Nadine/Documents/Google/Waltonian.pdf)
  - **This Humanoid Social Robot Hold Natural Conversations**  
 Pddnet, 31 Dec 2015  
[http://imi.ntu.edu.sg/IMIRResearch/Research\\_Areas/Nadine/Documents/Google/Pddnet.pdf](http://imi.ntu.edu.sg/IMIRResearch/Research_Areas/Nadine/Documents/Google/Pddnet.pdf)
  - **University in Singapore reveals new 'human-looking social robot', comparing it to Star Wars' C-3PO**  
 Independent, 31 Dec 2015  
[http://imi.ntu.edu.sg/IMIRResearch/Research\\_Areas/Nadine/Documents/Google/Independent.pdf](http://imi.ntu.edu.sg/IMIRResearch/Research_Areas/Nadine/Documents/Google/Independent.pdf)
  - **Nadine social robot looks eerily real**  
 Hot Recent News, 31 Dec 2015  
[http://imi.ntu.edu.sg/IMIRResearch/Research\\_Areas/Nadine/Documents/Google/Hot%20Recent%20News.pdf](http://imi.ntu.edu.sg/IMIRResearch/Research_Areas/Nadine/Documents/Google/Hot%20Recent%20News.pdf)
  - **Scientists managed to create a Social Robot**  
 The Monitor Daily, 31 Dec 2015  
[http://imi.ntu.edu.sg/IMIRResearch/Research\\_Areas/Nadine/Documents/Google/The%20Monitor%20Daily.pdf](http://imi.ntu.edu.sg/IMIRResearch/Research_Areas/Nadine/Documents/Google/The%20Monitor%20Daily.pdf)
  - **Meet Nadine, the terrifyingly lifelike 'social robot' that looks and acts like its owner and could one day work in your office**  
 Bublbe, 31 Dec 2015  
[http://imi.ntu.edu.sg/IMIRResearch/Research\\_Areas/Nadine/Documents/Google/Bublbe.pdf](http://imi.ntu.edu.sg/IMIRResearch/Research_Areas/Nadine/Documents/Google/Bublbe.pdf)
  - **Singapore Scientists Develop Nadine, An Emotionally Intelligent Humanoid Robot**  
 ValueWalk, 31 Dec 2015  
[http://imi.ntu.edu.sg/IMIRResearch/Research\\_Areas/Nadine/Documents/Google/Value%20Walk.pdf](http://imi.ntu.edu.sg/IMIRResearch/Research_Areas/Nadine/Documents/Google/Value%20Walk.pdf)
  - **Nadine, World's Most Human-Like Robot, Might Take Your Job One Day**  
 SPUTNIK, 31 Dec 2015  
[http://imi.ntu.edu.sg/IMIRResearch/Research\\_Areas/Nadine/Documents/Google/Sputnik.pdf](http://imi.ntu.edu.sg/IMIRResearch/Research_Areas/Nadine/Documents/Google/Sputnik.pdf)
  - **Human-Like Robot 'Nadine' Who Has a 'Personality, Mood and Emotions' Unveiled in Singapore**  
 ABC News, 31 Dec 2015  
[http://imi.ntu.edu.sg/IMIRResearch/Research\\_Areas/Nadine/Documents/Google/01\\_ABC%20News](http://imi.ntu.edu.sg/IMIRResearch/Research_Areas/Nadine/Documents/Google/01_ABC%20News)

[311215\\_Human-](#)

[Like%20Robot%20%27Nadine%27%20Who%20Has%20a%20%27Personality%20Mood%20and%20Emotions%27%20Unveiled%20in%20Singapore.pdf](#)

- **Scientists Say The Robots Of The Future Are Going To Be Friendly And 'Chatty'**  
MTV, 31 Dec 2015  
[http://imi.ntu.edu.sg/IMIResearch/Research\\_Areas/Nadine/Documents/Google/11\\_MTV\\_311215\\_Scientists%20Say%20The%20Robots%20Of%20The%20Future%20Are%20Going%20To%20Be%20Friendly%20And%20%27Chatty%27.pdf](http://imi.ntu.edu.sg/IMIResearch/Research_Areas/Nadine/Documents/Google/11_MTV_311215_Scientists%20Say%20The%20Robots%20Of%20The%20Future%20Are%20Going%20To%20Be%20Friendly%20And%20%27Chatty%27.pdf)
- **Meet Nadine, the social robot that can keep you company**  
The Daily Express, 31 Dec 2015  
[http://imi.ntu.edu.sg/IMIResearch/Research\\_Areas/Nadine/Documents/Google/18\\_Daily%20Express\\_311215\\_Meet%20Nadine,%20the%20social%20robot%20that%20can%20keep%20you%20company.pdf](http://imi.ntu.edu.sg/IMIResearch/Research_Areas/Nadine/Documents/Google/18_Daily%20Express_311215_Meet%20Nadine,%20the%20social%20robot%20that%20can%20keep%20you%20company.pdf)
- **Meet Nadine, the terrifyingly lifelike 'social robot' that looks and acts like its owner and could one day work in your office**  
International Business Times, 31 Dec 2015  
[http://imi.ntu.edu.sg/IMIResearch/Research\\_Areas/Nadine/Documents/Google/21\\_International%20Business%20Times\\_311215\\_Humanlike%20Social%20Robot%20Nadine.pdf](http://imi.ntu.edu.sg/IMIResearch/Research_Areas/Nadine/Documents/Google/21_International%20Business%20Times_311215_Humanlike%20Social%20Robot%20Nadine.pdf)

## 21. Funded research projects – Participation to European projects

---

- **ANINEX**  
*User Centred Computer Animation Techniques for Next Generation Digital Creation and Modelling*  
Period: December 2013 - November 2017  
Type: European Research  
MIRALab Total budget: CHF 188'000.-  
MIRALab Budget 2015: CHF 47'000.-  
  
Partners (5 partners):
  - National Centre for Computer Animation, Bournemouth University – United Kingdom
  - MIRALab, University of Geneva – Switzerland
  - National Laboratory for Information Science and Technology, Tsinghua University – China
  - The State Key Laboratory of Computer Science, Institute of Software, Chinese Academy of Sciences – China
  - The State Key Laboratory of Computer Aided Design and Computer Graphics, Zhejiang University – China
- **ITN-DCH**  
*Initial Training Network for Digital Cultural Heritage: Projecting our Past to the Future*  
Period: October 2013 - September 2017  
Type: European Research  
Website: <http://www.itn-dch.org/>  
MIRALab Total budget: CHF 459'230.-  
MIRALab Budget 2015: CHF 114'800.-  
  
Partners (14 partners):
  - Cyprus University of Technology - Cyprus
  - National Technical University of Athens - Greece
  - Universitaet Stuttgart – Germany

- Foundation for Research and Technology Hellas – Greece
- Fraunhofer Gesellschaft zur Förderung der angewandten Forschung e.v. - Germany
- Katholieke Universiteit Leuven – Belgium
- Fondazione Bruno Kessler – Italy
- Centre National de la Recherche Scientifique - France
- Universidad de Murcia - Spain
- Univerzav Ljubljani - Slovenia
- Arctron 3d Vermessungstechnik-und Softwareentwicklung Gmbh - Germany
- 7Reasons Medien Gmbh - Germany
- The University of Warwick – United Kingdom

- **MULTISCALEHUMAN**

*Multi-scale Biological Modalities for Physiological Human Articulation*

Period: October 2011 – September 2015

Type: European Research

Website: <http://multiscalehuman.miralab.ch/>

MIRALab Total budget: CHF 1'100'000.-

MIRALab Budget 2015: CHF162'500.-

Partners (7 partners):

- MIRALab, University of Geneva - Switzerland
- Les Hôpitaux Universitaires de Genève – Switzerland
- Universidade do Minho – Portugal
- Medizinische Hochschule Hannover – Germany
- Consiglio Nazionale Delle Ricerche - Italy
- Softeco Sismat Srl – Italy
- Gottfried Wilhelm Leibniz Universität Hannover – Germany

- **REPLAY**

*Reusable low-cost platform for digitizing and preserving traditional participative sports*

Period: March 2013 - February 2016

Type: European Research

MIRALab Total budget: CHF 313'600.-

MIRALab Budget 2015: CHF 104'500.-

Partners (8 partners):

- Fundacion Centro de Tecnologias de Interaccion Visual y Comunicaciones VICOMTECH – Spain
- Dublin City University – Ireland
- MIRALab, University of Geneva – Switzerland
- IN2 Search Interfaces Development Limited – United Kingdom
- Gaelic Athletic Association – Ireland
- Centre For Research and Technology Hellas – Greece
- Eusko Jaurlaritzza-Gobierno Vasco – Spain
- Vicon Motion Systems Limited – United Kingdom



**24. Others.** In this chapter, please indicate whatever that could not match another heading, like:

---

- CeBIT fair: “MultiScaleHuman project” at CeBIT, Hannover, Germany, 16-20 March 2015  
<http://www.cebit.de/en/exhibition/exhibitors-products/index.xhtml>
- Exhibition: “It began with Ada. Women in computer history”, Heinz Nixdorf Forum (Paderborn, Germany), 2 September 2015 - 10 July 2016  
<http://www.hnf.de/en/sonderausstellungen/preview-ada-lovelace.html>